

Mangusta 86



Make	Model	Length	Price	Year	Condition
Mangusta	86	26 m	EUR 925,000	1998	Used
Hull Material	Draft	Number of Engines	Fuel Type		
Fibreglass (GRP)	2.49 m	2	Diesel		

Mangusta 86 is most probably the best opportunity on the market for a 4-cabin flybridge yacht of 86-feet. Built in 1998, she has been always perfectly maintained by her 2 owners, and in the past 2 years virtually every part of the yacht has either been fully serviced or replaced. Perfectly maintained to the highest standards and presenting in mint condition, this Mangusta 86 Fly is the perfect choice for someone that is looking for a great value deal and a ready to go yacht! Built in 1998, she has been always perfectly maintained by her 2 owners, and in the past 2 years virtually every part of the yacht has either been fully serviced or replaced. Since 2008, her current owner has invested a lot of time, effort and money in the yacht, hiring a full-time crew of 3 to take care of her and making sure that the yacht is maintained to the highest standards.

Measurements

Cruising Speed: 38 km/h
Max Speed: 40 km/h
LOA: 26 m
Beam: 6.3 m
Max Draft: 2.49 m
Fuel Tanks #: 1
Fuel Tanks Cap.: 6000 L
Fresh Water Tanks #: 1
Fresh Water Tanks Cap.: 1300 L
Number of double berths: 2
Number of Cabins: 4
Number of Bathrooms: 4

Propulsion

Engine #1

Engine Make: MTU
Location: Port
Engine Year: 1998
Hours: 2132
Power: 1850 hp

Engine #2

Engine Make: MTU
Location: Starboard
Engine Year: 1998
Hours: 2132
Power: unknown

Additional Information

Accommodations

Number of single berths: 6
Number of double berths: 2
Number of cabins: 4
Number of heads: 5
Number of bathrooms: 4

Electronics

Radar

Cockpit speakers
Radio
Autopilot
Depthsounder
Plotter
Radar Detector
Wind speed and direction
DVD player
Log-speedometer
VHF
GPS
TV set
CD player
Navigation center
Repeater(s)
Compass

Inside Equipment

Bow thruster
Battery charger
Oven
Washing machine
Fresh water maker
Hot water
Microwave oven
Refrigerator
Electric head
Air conditioning
Dishwasher
Sea water pump
Electric bilge pump
Deep freezer
Air compressor
Heating

Electrical Equipment

Generator
Shore power inlet
Inverter
Electrical Circuit: 220V

Outside Equipment/Extras

Teak cockpit
Liferaft
Cockpit cushions
Hydraulic gangway
Teak sidedecks
Swimming ladder
Tender
Cockpit shower
Radar reflector
Cockpit table
Electric windlass

Covers

Bimini Top

Disclaimer

The Company offers the details of this vessel in good faith but cannot guarantee or warrant the accuracy of this information nor warrant the condition of the vessel. A buyer should instruct his agents, or his surveyors, to investigate such details as the buyer desires validated. This vessel is offered subject to prior sale, price change, or withdrawal without notice.



Underway



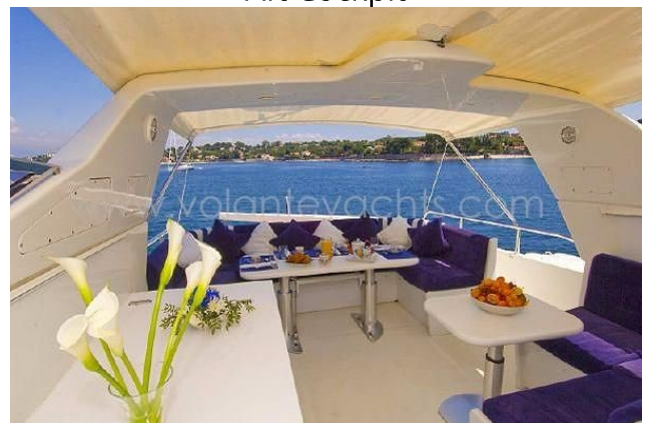
Foredeck



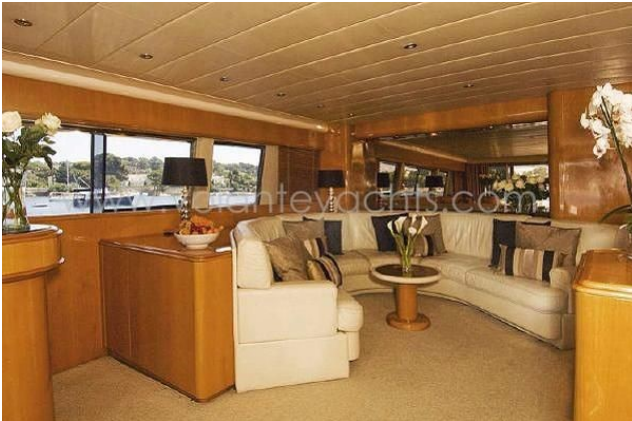
Aft Cockpit



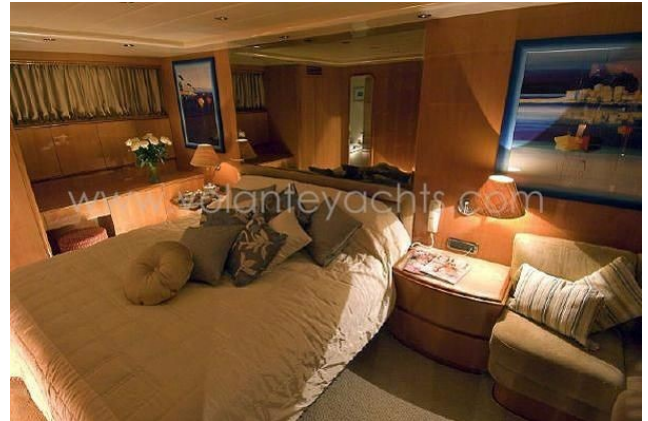
Flybridge



Aft Cockpit Seating



Saloon



Master Cabin



Saloon Dining Table



Guest VIP Cabin



Master Cabin



Twin Cabin

Deck Plan

